

Good Shepherd Primary & Nursery School

Annual Prospectus



Good Shepherd Primary & Nursery School
42 Dungiven Road
Waterside
Derry
BT47 6BW
Tel: 028 71348446

Principal: Mrs S McCafferty *B. Ed, M.Ed, PQHNI*

www.goodshepherdps.net

email: smccafferty143@c2kni.net



~ Learn, Believe, Respect, Achieve ~





Dear Parents/Guardians,

On behalf of the whole school community, I wish to warmly welcome you and your child to Good Shepherd Primary & Nursery School, Derry. Our School has served the Waterside Parish Community for over 40 years. Our whole school community takes pride in the fact that Good Shepherd Primary School is a happy, family and community based school where the pupils themselves, staff, parents and governors all have vital roles to play in helping all pupils reach their potential spiritually, physically, emotionally, academically and morally.

An atmosphere of concern, tolerance and respect for others is evident amongst all staff, pupils, parents and governors. Our school ethos is firmly based on Catholic Christian values and this ethos is reflected in our partnership between home, school and the parish. **As a Catholic school, we welcome children from all denominations, cultures and traditions.**

As a school we focus on ensuring that our pupils are **happy**, safe and secure. This provides the bedrock so that they can progress in the core curriculum areas, where they can reach their full potential. Here, we nurture talents and inspire our children to be lifelong learners. We firmly believe that strong relationships and routines support the holistic development of our pupils and accordingly, we place great emphasis on developing and maintaining these throughout the school.

A child attending Good Shepherd Primary & Nursery School can be assured of the highest quality of care, a broad and balanced curriculum with specific emphasis on literacy and numeracy as well as very high expectations. As a self - evaluating school, we consistently endeavour to improve and extend our practice. Accordingly, the school has a well-deserved reputation as being an innovative place of learning that works very effectively with all partner organisations.

We are a rights respecting school and this is central to all that we do. Child centered provision is paramount. Our Mission Statement is Learn, Believe, Respect, Achieve. The purpose of this prospectus is to help you have a better understanding of our school, how it operates and what we offer our pupils. However, no prospectus can convey the real ethos or atmosphere of a school. We invite you, therefore, to come and visit us and see the school for yourself.



Yours sincerely,

Mrs Suzann McCafferty (Principal)

~ Learn, Believe, Respect, Achieve ~



School Vision

Good Shepherd Primary & Nursery School is a Rights Respecting School. We aim to nurture close links and support for our pupils, parents, staff and local community. As a Catholic school, we promote faith, high academic achievement and lifelong learning.

We are firmly committed to:

- Creating a happy, caring, stimulating and secure environment for each child
- Developing in each child, Christian values, self-esteem and respect for others
- Promoting our school as a provider of quality education, with the co-operation of the wider community
- Developing enquiring minds and a sense of curiosity
- Nurturing talents, skills and interests
- Developing the academic, physical, social, moral and emotional abilities of each child so that each child can reach his/her potential
- Ensuring the inclusion of all pupils
- Always striving for better



We ensure that each child will achieve success through experiencing:

- A broad, balanced and challenging curriculum
- A stimulating learning environment
- A varied programme of extra-curricular activities and school visits
- An ethos that is supportive, encouraging and friendly
- An effective partnership between school, home and the wider community
- A variety of teaching approaches and strategies to meet the needs and learning styles of pupils
- Access to a range of varied and up-to-date resources

We demonstrate our commitment to working as a learning community by:

- Ongoing self-evaluation to ensure our vision is achieved
- Working collaboratively with all our stakeholders



Nursery School Provision



At our school, we have a wonderful Nursery Unit which is very much integrated into our Primary School. It is located within the main school building, therefore benefits from all the wonderful facilities which we have to offer as a school. This also gives great advantage to our children when transitioning from Nursery to Primary 1.

Children develop at different rates and their achievements vary; at Good Shepherd Primary and Nursery Unit, all children have the opportunity to follow a curriculum that enables them to make appropriate progress in learning and to achieve their full potential.

There are six pre-school Areas of Learning which are explored through play based learning:

- Personal, Social and Emotional Development
- Physical Development and Movement
- Language Development
- Early Mathematical Experiences
- The Arts
- The World Around Us



We at Good Shepherd Primary & Nursery School aim to develop the whole child by:

- promoting emotional, social, physical, creative and intellectual development;

~ Learn, Believe, Respect, Achieve ~



- developing self-esteem, self-control and positive attitudes towards others;
- developing language and communication skills to encourage the sharing of thoughts and feelings; and
- creating confident, eager, enthusiastic, independent, curious learners with a positive and problem-solving attitude to learning



We believe that young children learn best when:

- they feel happy and secure in a safe and stimulating environment that supports their well-being;
- adults are sensitive and understanding in their interactions with the children while extending their learning and development;
- the curriculum is broad and balanced, builds on their needs, and provides time for sustained involvement in play;
- they have opportunities to investigate and engage in a wide range of activities that are enjoyable, motivating and challenging;
- the activities are based on previous learning and are carefully planned, with some flexibility;
- they have the opportunity to develop concentration and skills such as observing, making decisions and problem solving; and
- parents/guardians/carers and other professionals work together in partnership

Our Nursery Team promote learning by:

- planning a wide variety of learning experiences that help to develop a range of skills and concepts, including observation, experimentation and free exploration of the children's surroundings;
- extending children's understanding of themselves and their families, their pre-school setting (both indoors and outdoors) and the wider environment;
- commenting, asking open-ended questions, and encouraging children to experiment and evaluate; and
- providing children with opportunities to learn about the world around them through books, pictures, posters and photographs, and by using appropriate ICT



To help children develop skills and concepts related to the world around them, our experienced Nursery teachers provide opportunities to engage in interesting activities that provide children with first-hand experiences to explore through their senses.



More information on the pre-school curriculum be found at: <https://ccea.org.uk/pre-school/curricular-guidance-pre-school-education>

Brothers' and Sisters' Club

Each day we offer after school supervision between 2-3pm for our foundation stage children in Primary 1 and 2 who have an older sibling at the school to allow for 1 family pick up. **This provision is free!** Supporting our school community is an important aspect of our provision.

The Breakfast Club



Our breakfast club runs every day from 8.10am. It is open to all pupils from Nursery -Primary 7. It costs £1 per day, per child. The children enjoy the choice of cereals, milk, fruit juice and toast.





Each day, our children complete the daily mile.

- ✔ It takes place in 15 minutes, with most children averaging a mile, or more, each day.
- ✔ Children run outside in the fresh air – and the weather is a benefit, not a barrier.
- ✔ There's no set up, tidy up, or equipment required.
- ✔ Children run in their uniforms so no kit or changing time is needed.
- ✔ It's social, non-competitive and fun.
- ✔ The children return to class ready to learn.
- ✔ It helps to improve fitness and achieve a healthy weight.
- ✔ It encourages children to be aware of their health.
- ✔ It's fully inclusive; every child, whatever their circumstances, age or ability, succeeds at The Daily Mile.



~ Learn, Believe, Respect, Achieve ~





Musical Pathways to Learning

Each week our Primary 1, 2 & 3 children enjoy the Musical Pathways to Learning (MPL) programme which is delivered by a musical specialist.

There is considerable research evidence which demonstrates that the skills learned are transferable across all subjects in the primary curriculum. MPL is a whole class programme, which involves every child; the sessions are 30 minutes long and typically run for 30 weeks over the academic year.

The MPL programme has been in operation in the Education Authority (originally in the Western Region) since September 2008. In 2013 the programme was an integral part of the City of Culture 'Music Promise', as MPL was given the responsibility of delivering weekly music lessons to all children, between the ages of 3 and 8 years old in the Derry City Council (DCC) area; 7800 students in total.

The MPL programme ensures that all children can access high quality weekly music lessons and participate in performance opportunities. Every class involved in the programme is given the chance to participate in an MPL presentation. The programme is proven to be successful and is valued by teachers, parents and pupils.

The MPL programme has been shown to:

- help children find their singing voice
- develop intellect and character
- develop imagination
- build self esteem
- help children acquire self-discipline, awareness and tolerance
- develop social and communication skills



Every child in our school has access to the Northern Ireland Curriculum. Our Curriculum is planned and delivered to meet the individual needs of all our pupils.

The Northern Ireland Curriculum is organized in the following learning areas:

- Language & literacy
- Numeracy & Mathematics
- World Around Us (Geography, History & Science)
- Information, Communication & Technology (I.C.T.)
- Physical Education (P.E.)
- Religious Education
- The Arts (Music, Art & Drama)



At the heart of the curriculum lies an explicit emphasis on the development of skills and capabilities for life-long learning and for operating effectively in society. Children progressively develop the range of cross-curricular skills and thinking skills/personal capabilities listed below:

Cross Curricular Skills:

- Communication
- Using Mathematics
- Using ICT

Thinking Skills & Personal Capabilities:

- Managing information
- Working with others
- Thinking, problem-solving and decision making
- Self-management
- Being creative



Using ICT across the curriculum:

We recognise the importance of ICT in all areas of the curriculum and the outside world. ICT is used as a resource in many areas of the curriculum and for all age ranges and abilities.

Across the curriculum, pupils are given opportunities to develop skills in the five ICT strands:

1. Explore
2. Express
3. Exchange
4. Evaluate
5. Exhibit

Our school is very well equipped in ICT; we have interactive whiteboards in each classroom, apple technologies and a newly refurbished multi-media suite.



We teach Phonics at Good Shepherd Primary & Nursery School

Phonics is a way of teaching children to read quickly and skilfully. They are taught how to:

- recognise the sounds that each individual letter makes;
- identify the sounds that different combinations of letters make - such as 'sh' or 'oo'; and
- blend these sounds together from left to right to make a word.

Children can then use this knowledge to 'de-code' new words that they hear or see. This is the first important step in learning to read.

Research shows that when phonics is taught in a structured way – starting with the easiest sounds and progressing through to the most complex – it is the most effective way of teaching young children to read. It is particularly helpful for children aged 5 to 7.

Almost all children who receive good teaching of phonics will learn the skills they need to tackle new words. They can then go on to read any kind of text fluently and confidently, and to read for enjoyment.



Children who have been taught phonics also tend to read more accurately than those taught using other methods, such as 'look and say'. This includes children who find learning to read difficult, for example those who have dyslexia.



Religious Education



We follow the Grow in Love Programme for Religious Education. We work closely with the Parish to prepare the children for the Sacraments of Reconciliation, First Holy Communion and Confirmation. If a Parent/Guardian wishes their child to be removed from Religious Education, this request must be put in writing to the Principal.



~ Learn, Believe, Respect, Achieve ~



Learning through Play

Play provides opportunities for children to experience learning in a meaningful and purposeful way. It is a means by which children can develop the skills and capabilities to be effective learners. Play provides a context for children to access the content of the curriculum.

At our school, opportunities are given to children to build on previous experiences and make connections in their learning in an enjoyable way. The learning environment which we provide encourages children to develop positive dispositions and share ownership of their learning.





Play based Learning:

- Develops the fundamental skills of literacy, numeracy and oral communication
- Provides rich and varied contexts for developing skills such as observing, organising, recording, interpreting and predicting
- Promotes positive attitudes to school and to learning
- Provides opportunities to learn in a practical way
- Provides opportunities for developing movement and manipulative skills
- Develops natural curiosity and stimulates imagination
- Provides opportunities for exploration, investigation, problem solving and decision-making
- Provides opportunities to develop knowledge, understanding and skills through a range of contexts spanning all subjects in the curriculum



- Play promotes children's development, learning, creativity and independence
- Play keeps children healthy and active – active children become active adults
- Play fosters social inclusion. It helps children understand the people and places in their lives, learn about their environment and develop a sense of community
- Play allows children to find out about themselves, their abilities and their interests
- Play is therapeutic. It helps children to deal with difficult or painful circumstances, such as emotional stress or medical treatments
- Play gives children the chance to have fun

Special Educational Needs and Inclusion

In line with the Code of Practice (1998) and the Special Educational Needs Disability Order NI (SEND0, 2005), we promote an 'inclusive ethos'. We aim to educate all of our pupils by ensuring access to a broad and balanced curriculum, suitably differentiated to meet the needs of all pupils so that children can achieve their potential. We recognise that each and every child is unique and special.

If the school is still concerned about a child's progress, the school will again inform and consult with parents and may recommend that a more formal assessment of the child's special educational needs is carried out by the Educational Psychologist and other external agencies supporting the child. The specialist services from the Education Authority will make recommendations based on the outcome of the formal assessment.

We involve both the child and his/her parents in setting and reviewing targets. We encourage parents to work closely with us in supporting children with learning difficulties and involve them at each stage of the process.



Our Special Educational Needs Coordinator is Mr B. Doherty

We also provide:

- Quiet sensory rooms
 - Professional development opportunities for all staff
 - Close liaison with our Educational psychologist and other educational professionals
 - Early intervention where necessary
 - Experienced teachers in supporting children who have 'English as an additional language'
 - Experienced and committed learning support assistants
-
- We have ramp access to the school building, internal stair lifts and hygiene rooms
 - We develop and monitor individual education plans to meet individual needs
 - Our facilities are well maintained, spacious and modern
 - We operate an 'Open Door Policy' in school and communicate with parents regularly
 - Good home/school communication is vital



Assessment



Assessment in the Foundation Stage

- Observations are the main assessment tool used within Year 1 and Year 2
- Assessment informs future teaching and Learning
- It aims to identify strengths and opportunities for development
- It is used to assess the 'whole' child including social and emotional development
- MIST (Middle Infant Screening Test)

Formal Assessment in Years 3-7

The main assessments that pupils complete include:

- CAT test
- PTE (Progress Test in English)
- PTM (Progress Test in Mathematics)
- Spelling



Promoting Positive Behaviour

At Good Shepherd Primary & Nursery School, we are so proud of the excellent behaviour and manners which our pupils demonstrate. Good behaviour contributes to providing a secure and happy learning environment. We believe in a positive approach to behaviour support through various reward systems like student of the week, class reward charts and class captains.

Student of the Week



We celebrate Anti-bullying week each year and promote a culture of kindness, care and speaking out. We are a Rights Respecting School and every child in our school has the right to be heard and listened to.



~ Learn, Believe, Respect, Achieve ~



Pastoral Care

We are very proud of our Pastoral Care provision here at Good Shepherd Primary & Nursery School, and this was recognised as a major strength in our most recent inspection report. We want each child to feel safe and secure; we want to influence their opinions, values and attitudes in a positive manner and we want to create an environment that is characterised by healthy relationships and mutual respect.

However, we also need to have systems in place should there be any cause for concern, and each year we send out our Child Protection Policy detailing our approaches to such concerns. This policy is also available on our website.



One of our primary concerns is to ensure that we meet the social and emotional needs of all our children in our care. We work closely with local agencies in order to support the needs of our families. Our safeguarding team is always ready to listen and assist.

Health and Well-being

At Good Shepherd Primary & Nursery Unit, we recognise the importance of ensuring our children's physical and mental health is looked after. We promote and achieve this through a variety of ways:

- 2 hours' quality PE each week
- PDMU curriculum
- The Daily Mile
- School Counsellor
- Extra-curricular activities
- Circle time
- Healthy Breaks
- Nutritional and well-balanced canteen dinners
- Active and engaging PE lessons
- Neuronimo programme
- Outdoor play
- Brain Breaks
- Close links with the School Nurse and Health Visitor



Student Voice

We believe that the student voice is very important at Good Shepherd Primary & Nursery School. Our children are actively involved in the leadership of the school and their thoughts and opinions are valued.

We regularly carry out evaluations and questionnaires with our children, and this helps inform future practice. We have a student council who assists the Principal in various decision-making projects, a busy eco-council who are our eco-champions, and digital leaders who assist in all things ICT.



School Uniform

School Uniforms can be purchased from Select Kidz, Spencer Road.

Nursery

Choice of coloured jumpers and polo-shirts with Nursery crest
Navy jogging bottoms with elastic waist
Velcro shoes



Girls

Navy skirt/pinafore/trousers
Navy V-neck jumper with school crest
White Polo shirt with crest (Primary 1 & Primary 2)
White shirt and green/navy tie (Primary 3-Primary 7)
Navy socks or tights
Black shoes

Boys

Navy trousers
Navy V-neck jumper with school crest
White Polo shirt with crest (Primary 1 & Primary 2)
White shirt and green/navy tie (Primary 3-Primary 7)
Navy socks
Black shoes



PE uniform

Primary 1 & Primary 2: Black plimsolls
Primary 3-Primary 7:
Navy bottoms
White t-shirt
Navy zip up
Trainers

If you think your child is entitled to free school meals or uniform clothing assistance, please contact the Education Authority on tel: 028 82 411411 or on the following link:

<https://www.eani.org.uk/financial-help/free-school-meals-uniform-grants>



Our School Day

(This is not reflective of current Covid restrictions which are currently in operation)

- Our Breakfast club is open from 8.10am daily. Everyone welcome!
- School gates open at 8.45am
- Teaching and learning begins at 9am
- Nursery finishes at 1.15pm daily
- Primary 1 & 2 finish at 2pm daily
- Primary 1 & 2 brothers and sisters club 2-3pm daily
- Primary 3-7 finish at 3pm
- After school clubs 2-4pm Monday-Thursday for P1-P7 pupils



Extra-Curricular Activities

We aim to provide a wide variety of extra-curricular clubs which aim to support and enhance teaching and learning as well as interests, talents, hobbies, relaxation and life skills. We liaise with outside specialist providers such as R9 Multi Sports and Maiden City Soccer to assist in our extra-curricular provisions.

These include:

- Lego
- Mini Professors Science
- Minecraft and coding
- Soccer
- Singing
- Guitar
- Gaelic
- Netball
- Drama
- Cross country
- Irish Language
- Yoga
- Dance
- Gardening
- ICT
- Chess
- Choir
- String instrument tuition



School Achievements

Over the years at Good Shepherd Primary & Nursery School, we are proud of our achievements. We have achieved the following prestigious awards and aim to build on these in the future:

- Sustrans Active Travel Bronze Award (2023)
- Rights Respecting School Award – Level 1 & Level 2
- Eco Schools (Bronze)
- British Council International Schools Award

~ Learn, Believe, Respect, Achieve ~



- Winners of the Ryan McBride Soccer Cup 2022
- Winners of the Wilson Manning Soccer Cup 2022
- North West Swimming Gala- multiple winners 2022 & 2023
- Cross Country- multiple winners 2022 & 2023
- Girls Gaelic team: semi finalists in the Derry City Championship
- Winners of the Na Piarasigh Dore Transa Girls Gaelic Schools Competition 2022
- Funding awarded from Kellogg's to support our free fresh fruit provision for every child
- Funding awarded from Live Here Love Here to develop our outdoor learning spaces
- Funding awarded from SSE Airtricity to support ICT provision and outdoor learning spaces



~ Learn, Believe, Respect, Achieve ~



Meet the Staff

Mrs S. McCafferty – Principal

Mrs M. Harley – Vice Principal

Teaching:

Mrs C. Kyle

Mrs R. Warne

Mrs A. Kivlehan

Mrs C. McKinney

Mrs S. Mitchell

Miss J. Logue

Mrs R. Doran

Mrs M. McCormack

Mrs A. Donnelly

Mr B. Doherty

Mrs D. Wilson

Mrs R. Connor

Mrs. P. Houston

Mrs M. Grant

Mrs M. Forbes

Mr D. Herron

Learning Support Assistants:

Miss S. Stanway

Miss C. Toland

Miss C. Maguire

Miss C. Donaghey

Miss E. Donaghey

Miss C. Hill

Mrs O. McAllister

Mrs R. Harkin

Miss A. Tracey

Mrs K. Tyre

Ms C. Quigley

Miss G. Bradley

Mrs K. Krawczyk

Miss R. Bradley

Miss N. Ferguson

Miss A. McGonigle

Ms S. Mullan

Supervisors:

Mrs B. Harkin

Mrs M. Doherty

Mrs K. Bradley

Miss C. Lynch

Miss S. O'Bryan

Mrs A. McKeever – Secretary

Mrs P. Jordan –Building Supervisor

Mr P. Ferguson – School Crossing Patrol



The Designated Teachers for Child Protection in our Nursery:



The Designated Teacher for
Child Protection is Mrs. C. Kyle



The Deputy Designated Teacher
for Child Protection is Mrs. Warne

The Designated Teachers for Child Protection in our Primary School:



The Designated Teacher for
Child Protection is Mrs. M. Harley



The Deputy Designated Teacher
for Child Protection is Mrs. S. McCafferty



Good Shepherd Primary and Nursery School is committed to the provision of a high quality education for all pupils and high standards to all, which it serves. We believe that the fostering of trust and good relationships with the Parents/Guardians of our pupils is very important. A close partnership between home and school should help ensure that all our children learn and develop to their full potential in a caring, supportive and safe environment. Good communication is essential if we are to achieve this. If you have any concerns about any aspect of your son/daughter's care /education please contact the school and arrange a meeting with the class teacher and/or the Principal.

We would also encourage you to attend our Parent/Teacher meetings so that members of staff can keep you informed regarding your child's progress and development.

If you have any concerns about your child's safety you should use the following procedure:

- ✓ I have a concern about my child's safety.
- ✓ I can talk to the Teacher.
- ✓ If I am still concerned I can talk to the Designated Teacher for Child Protection (Mrs Maria Harley)
- ✓ If I am still concerned I can talk to the Principal (Mrs S. McCafferty)
- ✓ If I am still concerned I can talk/write to the Chairperson of the Board of Governors (Mr P. Duffy)
- ✓ At any time I can talk to the Duty Social Worker in Gateway Team tel: 028 71314090 or the PSNI Public Protection Unit tel: 0845 600 8000

This leaflet can only provide a summary of our child protection policy. A more detailed policy is available on our website or on request from the school office. Contact details are provided below. This policy will be reviewed annually and issued to parents at least once every 2 years. Should you have any questions to ask or comments to make in relation to the content of this leaflet or the full policy, please do not hesitate to contact the Designated Teacher for Child Protection or the Principal.

Useful Contact Numbers / information:

School Address: 42 Dungiven Road
Derry
BT47 6BW

Tel Number: 028 71348446

E-Mail Address:
info@goodshepherd.derry.ni.sch.uk
School Website:
www.goodshepherdps.net

Social Services Gateway Team: 028 71 314090

PSNI Public Protection Unit: 0845 600 8000

Learn, Believe, Respect, Achieve



Pastoral Care

Safeguarding / Child Protection Policy (Summary)

Good Shepherd Primary & Nursery School

Learn, Believe, Respect, Achieve

Aims

We in Good Shepherd Primary and Nursery School have a responsibility for the Pastoral Care, general welfare and safety of the children in our care and we will carry out this duty by providing a caring, supportive and safe environment, where each child is valued for his or her unique talents and abilities, and in which all our pupils can learn and develop to their full potential.

Principles:

The general principles, which underpin our work, are those set out in the UN Convention on the Rights of the Child and are enshrined in the Children's (Northern Ireland) Order 1995, The Education and Libraries (NI) Order 2003, the Department of Education (Northern Ireland) guidance "Pastoral Care in Schools - Child Protection" (DENI Circular 99/10) and the Area Child Protection Committees' Regional Policy and Procedures (2005).

The following principles form the basis of our Child Protection Policy.

- It is a child's right to feel safe at all times, to be heard, listened to and taken seriously.
- We have a pastoral responsibility towards the children in our care and should take all reasonable steps to ensure their welfare is safeguarded and their safety is preserved.
- In any incident the child's welfare must be paramount this overrides all other considerations.
- A proper balance must be struck between protecting children and respecting the rights and needs of parents and families; but where there is conflict the child's interest must always come first.

School Safeguarding Team:

Members of the Schools Safeguarding team are:

The Chair of the Board of Governors (Mr P. Duffy)
The Designated Governor for Child Protection (Dr M. Gormley)
The Designated Teacher for Child Protection (Mrs Maria Harley)
The Deputy Designated Teacher for Child Protection (Mrs S. McCafferty).
Other members of Safeguarding Team: Mrs C. Kyle/Mrs R. Warrne /Mrs A. Kivlehan/Mrs P. Houston/Mr D. Heron.

Members of the team have clear roles and responsibilities in relation to the safeguarding of pupils within the school and these are detailed in our full child protection policy.

Procedures

In order to protect our pupils we at Good Shepherd Primary and Nursery School will adhere to the following procedures.

- All staff teachers, non-teaching staff and volunteers will have clear guidance on the action, which is required where abuse or neglect is suspected.
- All staff and volunteers will undergo appropriate vetting procedures in order to maintain the highest standard of professional care towards our children.
- All teaching and ancillary staff will attend a Child Protection training programme organised by the Designated Teacher.
- Children will be supervised at all times while in the school grounds.
- All visitors to the school must report to the Secretary's office.

Bullying concerns will be responded to sensitively in our school. All staff will be vigilant at all times and will aim to prevent bullying by raising awareness with pupils, staff and parents about bullying, its forms and consequences.

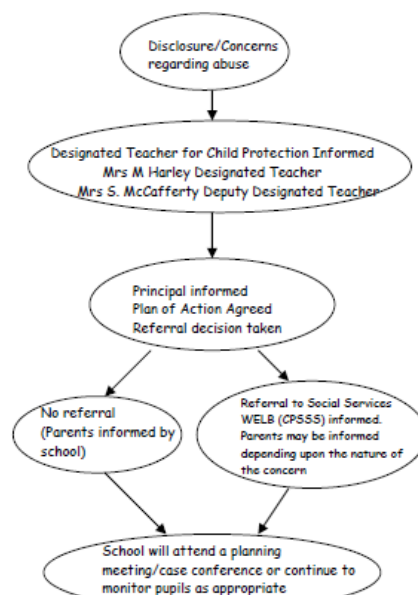
Parents can play their part in safeguarding by:-

- telephoning the school on the first morning of their child's absence, so as the school is reassured as to the child's well-being;
- making requests to the school in advance for permission to allow their child to attend medical or other appointment including providing details of any arrangements for the collection of the child;
- informing the school whenever anyone, other than themselves, intends to pick up the child after school;
- familiarising themselves with the schools safeguarding policies/procedures e.g. Anti Bullying, Positive Behaviour, Internet and Child Protection Policies;
- reporting to the school office when they visit the school;
- sharing any concerns, they may have in relation to their child with the school.

All staff at Good Shepherd Primary and Nursery School will ensure that all children are aware of who they can talk to if they are sad, worried, being bullied or have any other concerns.

The Designated Teacher for Child Protection is Mrs Harley and the Deputy, Mrs McCafferty will assume responsibility in her absence.

The Department of Education of Northern Ireland requires all those working in education to co-operate fully with social services and other agencies to protect children. It is therefore our duty to refer if there is a concern about any form of abuse. The following diagram shows the procedures we are required to follow and is based upon the procedure described in The Department of Education publication 'Pastoral Care in School - Child Protection (1999)'.



~ Learn, Believe, Respect, Achieve ~



Board of Governors

The Board of Governors of Good Shepherd Primary & Nursery School, is made up of enthusiastic and committed people from various parts of our parish who work in close partnership with the staff of the school, to ensure that each child reaches his/her fullest potential. Those on the Board of Governors come from various walks of life and each is dedicated to enhancing the educational experience and outcomes for all those in our care. All are rooted in supporting the role of Catholic education.

The governors play an important role within school - they provide strategic management, critical challenge and accountability. They appoint the principal and staff, and delegate the daily management of the school to them. They also oversee all recruitment and finance matters, admissions, monitor all aspects of the curriculum including educational outcomes, and pay special attention to the handing on of the faith within the school. The Board of Governors also play a central role in our Safeguarding team.

Meet the Governors:

Mr P. Duffy: Parent Representative (Chair)

Dr M. Gormley: Trustee

Mrs Siji Abrahams: Trustee

Mr N. Sproule: Trustee

Dr E. Farrelly: Trustee

Miss C. Malcolm: Dept. of Education Representative

Mr H. Hastings: Education Authority Representative

Mrs F. Desmond: Teacher Representative

Mrs S. McCafferty: Principal & Secretary to the Board of Governors



Friends of Good Shepherd

At Good Shepherd Primary & Nursery School, we have a dedicated and motivated parent-teacher association who actively engage in fundraising throughout the school year. This funding is used to enrich the children's learning experiences and assist in the purchase of additional resources. The staff of Good Shepherd Primary & Nursery School, have always recognised and cherished the important role of parents in children's education, and we actively support this via our website, social media platforms, parent meetings and regular newsletters. As a school, we value and are extremely thankful for the support that we receive from our parents and guardians. In liaising closely with parents and guardians, we aim to provide the best for the children in our care.

5 Reasons to join PTA

(membership is annual)

1. Benefit your child!

Research shows that children perform better when parents are involved both at home and at school

2. Get connected!

There is no better way to know what's happening at school

3. Tap into a network!

PTA connects you to other parents and teachers through meetings, events and communication, helping to build a sense of community

4. Be a role model!

By becoming a PTA member, you'll be demonstrating to your child, the importance you place on education

5. Witness Improvement!

By getting involved in PTA, you'll be part of the solution – helping to make positive changes

Admissions Criteria for Nursery & Primary 1 will be available on the Education Authority & school website:

www.eani.org.uk/parents/admissions

www.goodshepherdps.net



~ Learn, Believe, Respect, Achieve ~

