

## **October 2025 Newsletter**



From Wednesday 1<sup>st</sup> October our Primary 7 children will be learning Mandarin each week. This has kindly been facilitated by Lumen Christi College. We are delighted to be able to offer this learning experience to the children.

---



New Dinner Menu starting Monday 6<sup>th</sup> October:  
<https://www.goodshepherdps.net/parents-area/dinner-menu/>



We are celebrating Maths Week Ireland throughout our school from Monday 13<sup>th</sup>-Friday 17<sup>th</sup> October. There will be a wide variety of fun and engaging maths activities, visitors, problem solving tasks and investigations going on both in and out of school. Click the links below to access various resources to support Maths at home here:

- <https://www.mathsweek.ie/2025/>
  - <https://www.goodshepherdps.net/parents-area/useful-websites-and-resources/>
  - <https://www.goodshepherdps.net/parents-area/educational-apps-to-support-learning/>
- 



Our student council and eco council are also holding a 'bring and buy' book sale during Maths Week Ireland to support our financial capabilities curriculum and to reduce waste. All money raised will go to support our chosen charity Cancer Focus Northern Ireland.

**Tuesday 14<sup>th</sup> October & Wednesday 15<sup>th</sup> October:** have a clear out and donate children's books to the school office which are clean and in good condition.

**Thursday 16<sup>th</sup> October:** Book Sale managed by our school councils. All books will be 20p each. Any books not purchased will be used in our class libraries or will be donated to a local charity.

# Non-uniform day!

The school council would also like to hold a non-uniform day on Friday 17<sup>th</sup> October also in aid of Action Cancer. £1 donation per child or £2 per family. Thank you for your support.

---



Please ensure all dinner money arrears are settled on Parent Pay. Our Dinner Money Policy is linked below for further details. Dinners should be paid for in advance.

Thank you!

[https://storage.googleapis.com/siteassetsswd/475/docletter/20250618082956\\_54\\_DINNER\\_MONEY\\_POLICY\\_2025.pdf](https://storage.googleapis.com/siteassetsswd/475/docletter/20250618082956_54_DINNER_MONEY_POLICY_2025.pdf)



Free Fruit Breaks available every day!

### Primary 1 Parent/Guardian Event Details:

This is a wonderful opportunity to find out what your child will be learning at school and how you can support them. There will be a free stationary goodie bag for all those who attend to support homework activities. We look forward to seeing you then!



Foundations  
for  
Learning

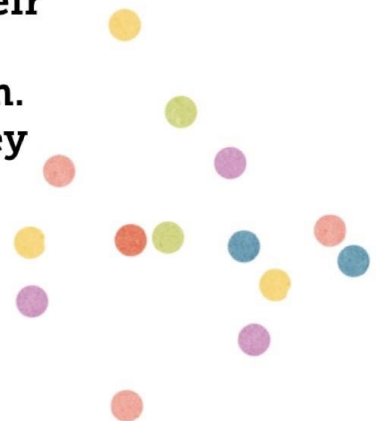


**FAO: Parents/Guardians of Primary 1 Children.**

**Our Primary 1 teachers will be holding an information afternoon in their classrooms on Tuesday 21st October at 1.30pm. They will be focusing on the key learning skills of:**

- Phonics
- Motor Skills
- Pencil Control
- Letter Formation
- Independence skills

**There will be a homework stationary goodie bag for all those in attendance. All welcome!**







- Nursery children are welcome to attend our breakfast club!
  - Breakfast club is open from 8.10am-8.30am.
  - **Please only send your child if they are independent when eating to ensure their wellbeing.**
  - Children should be accompanied by an adult to the canteen door.
  - Please enter the **school grounds via the upper nursery gate** and directly into the canteen via the steps located beside the school reception area.
  - The cost of this will be £1 per day, per child. This should be paid in cash each day to breakfast club supervisory staff. This charge covers the cost of food, cleaning supplies and staff.
  - Children will have a choice of toast, cereals, fruit juice and milk each day.
- 



We still have some availability for our afterschool clubs. Please contact the school office for further information.

## Attendance Matters!

As you are already aware it is essential that your child attends school regularly and maintain a pattern of good attendance throughout their school career.

Excellent attendance at school is important to allow children to fulfil their potential. Every single day a child is absent from school equates to a day of lost learning.

In school we have an obligation to monitor children's attendance very closely and to report attendance percentages to the Education Welfare Officer on a regular basis.

Punctuality is essential as each time a child is late to school they are marked late and when they arrive after registration has closed (09:00am)- this impacts on their attendance.

If your child's attendance is causing concern, we will follow the agreed procedures in school:

- The class teacher will inform you of your child's attendance percentage (below 90%)
- If attendance continues to cause concern, then you will receive a letter from DTCP in school
- If attendance continues to cause concern, then you will be invited to a pre-referral meeting in school. Our EWO Mrs Aine Hudson may be in attendance
- If your child's attendance is 85% or below/causing concern, we are obliged to make a referral to EWS.

It should be noted that holidays must **not** be arranged during the school terms. Sufficient notice of school holiday dates is given to parents/guardians in order for holidays to be arranged during these times.

We as a school, want to help support you in improving your child's attendance in order for them to reach their full potential.

If you need to discuss any issues surrounding absences or support strategies that can be put in place to improve attendance, during the school year, please contact Mrs McCafferty or Mrs Harley at the school.



## EVERY SCHOOL DAY COUNTS –

Every single day a child is absent from school equates to a day of lost learning.

Attendance percentages can be misleading.

|                 |   |              |
|-----------------|---|--------------|
| 100% Attendance | 0 Days Missed   | Excellent    |
| 95% Attendance  | 9 Days of Absence<br>1 Week and 4 Days of Learning Missed   | Satisfactory |
| 90% Attendance  | 19 Days of Absence<br>3 Weeks and 4 Days of Learning Missed | Poor         |
| 85% Attendance  | 28 Days of Absence<br>5 Weeks and 3 Days of Learning Missed | Very Poor    |
| 80% Attendance  | 38 Days of Absence<br>7 Weeks and 3 Days of Learning Missed | Unacceptable |
| 75% Attendance  | 46 Days of Absence<br>9 Weeks and 1 Day of Learning Missed  | Unacceptable |

For some parents, 90% may seem like an acceptable level of attendance, but the reality is that 90% attendance means that your child will miss half a school day each week or 19 days of school during the school year – that's nearly 4 school weeks.



Give your child the best start in life – every school day counts.

**Please ensure that you contact the school office in the morning if your child is not able to attend school. Attendance updates will be issued to parents/guardians for the month of September in due course as we continue to monitor attendance and offer support where needed.**



Please ensure that you download the Schools NI App which is linked to our website. Click on the ? on the app and ensure that notifications are turned on. This is our central method of communication.



**Teaching and learning starts at 9am every day.** It is important that your child is punctual for school. School gates open from 8.45am. Breakfast club is open from 8.10am. No need to book in for the breakfast club- £1 a day per child, all welcome!

### **Safeguarding Information**



**In the interests of health and safety we now ask that children do not bring any shellfish products or nut products to school for either break or lunch. This includes Nutella.**





We would like to take the opportunity to remind parents/guardians that **no cars are permitted inside the school grounds at any time** unless this has been pre-arranged with Mrs McCafferty or you are a blue badge holder- spaces are very limited. Please share this information with grandparents and childminders as refusal often causes offence.

**Please ensure that the school gates are kept clear. Cars should not be parked on the yellow zigzag lines outside the school gates at any time.** Please talk to your child about general road safety. Enter and exit the school using the pedestrian gates only. Once your child is collected from school, please keep them beside you at all times. These measures are in the interest of everyone's health and safety. Thank you!

### **Members of the Schools Safeguarding team are:**

The Chair of the Board of Governors (Mr P. Duffy)

The Designated Governor for Child Protection (Dr M Gormley)

The Designated Teacher for Child Protection (Mrs Maria Harley)





Deputy Designated Teacher for Child Protection (Mrs S. McCafferty).

Other members of Safeguarding Team:

Mrs P. Houston/Mrs R Warne /Mrs Kyle/ Mrs A Kivlehan/Mr D Herron.

School policies can be found on the school website under the 'My School' section. There is also a wide range of support information for parents in the 'Parents Section' of the school website. This is updated regularly.

| Date   | What's On?  |
|--|---|
| Wednesday 1 <sup>st</sup> October  | Primary 7 Mandarin Lessons  |
| Wednesday 1 <sup>st</sup> October  | P6 Swimming Week 4  |
| Wednesday 1 <sup>st</sup> October  | After School Guitar Lessons P5, P6 & P7 Week 2<br>3pm-3.30pm & 3.30pm-4pm               |
| Wednesday 1 <sup>st</sup> October  | After School Dance P1 & P2: 2-3pm,<br>P3 P4 P5 P6 P7: 3-4pm Week 2                      |
| Thursday 2 <sup>nd</sup> October<br><b>Derry Journal</b>   | Derry Journal Primary 1 Photograph  |
| Thursday 2 <sup>nd</sup> October   | After School Maiden City Soccer P1 & P2: 2-3pm,<br>P3, P4, P5, P6 & P7: 3-4pm Week 2    |
| Thursday 2 <sup>nd</sup> October   | Crafty Kidz Art & Craft Club<br>P1 & P2: 2-3pm,<br>P3, P4, P5, P6 & P7: 3-4pm Week 2    |
| Friday 3 <sup>rd</sup> October<br> | Primary 4Mr Doherty/Mrs Anderson's Class Assembly @<br>9.30am. All welcome to attend.   |
| Monday 6 <sup>th</sup> October   | Children of Fatima Prayer group P4-P7   |
| Monday 6 <sup>th</sup> October   | After School R9 Sports P1 & P2: 2-3pm,<br>P3 P4 P5 P6 P7: 3-4pm. Week 3                 |
| Monday 6 <sup>th</sup> October   | After School Mini Professors P1 & P2: 2-2.50pm,<br>P3 & P4: 3-3.50pm Week 2             |
| Tuesday 7 <sup>th</sup> October  | After School Singing lessons P1 & P2 2-2.45pm,<br>P3, P4, P5, P6 & P7 3-3.45pm Week 3   |
| Tuesday 7 <sup>th</sup> October  | Young Authors and book publishing afterschool club.<br>Week 1 3-4pm P5, P6 & P7. Week 3 |
| Tuesday 7 <sup>th</sup> October  | Boys Football @Ebrington PS3-4pm  |
| Wednesday 8 <sup>th</sup> October  | Primary 7 Mandarin Lessons  |
| Wednesday 8 <sup>th</sup> October  | P6 Swimming Week 5  |
| Wednesday 8 <sup>th</sup> October  | After School Guitar Lessons P5, P6 & P7 Week 3<br>3pm-3.30pm & 3.30pm-4pm               |
| Wednesday 8 <sup>th</sup> October  | After School Dance P1 & P2: 2-3pm,<br>P3 P4 P5 P6 P7: 3-4pm Week 3                      |
| Thursday 9 <sup>th</sup> October   | After School Maiden City Soccer P1 & P2: 2-3pm,<br>P3, P4, P5, P6 & P7: 3-4pm Week 3    |
| Thursday 9 <sup>th</sup> October   | Crafty Kidz Art & Craft Club<br>P1 & P2: 2-3pm,   |

|   |   |
|---|---|
|   | P3, P4, P5, P6 & P7: 3-4pm Week 3   |
| <b>Friday 10<sup>th</sup> October</b><br>  | Primary 4 Mrs Connor/Mrs Duffy's Class Assembly @ 9.30am. All welcome to attend.        |
| <b>Monday 13<sup>th</sup>-Friday 17<sup>th</sup> October</b><br><b>Maths Week Ireland</b><br> |   |
| <b>Monday 13<sup>th</sup> October</b><br>  | Nursery- Primary 7<br><br>School Photographer   |
| <b>Monday 13<sup>th</sup> October</b>   | After School R9 Sports P1 & P2: 2-3pm,<br>P3 P4 P5 P6 P7: 3-4pm. Week 4                 |
| <b>Monday 13<sup>th</sup> October</b>   | After School Mini Professors P1 & P2: 2-2.50pm,<br>P3 & P4: 3-3.50pm Week 3             |
| <b>Tuesday 14<sup>th</sup> October</b>  | After School Singing lessons P1 & P2 2-2.45pm,<br>P3, P4, P5, P6 & P7 3-3.45pm Week 4   |
| <b>Tuesday 14<sup>th</sup> October</b>  | Young Authors and book publishing afterschool club.<br>Week 1 3-4pm P5, P6 & P7. Week 4 |
| <b>Tuesday 14<sup>th</sup> October</b>  | Girls Football @The Shared Village 3-4pm  |
| <b>Wednesday 15<sup>th</sup> October</b>  | Donate books for our Book Sale  |
| <b>Wednesday 15<sup>th</sup> October</b>  | P6 Swimming Week 6  |
| <b>Wednesday 15<sup>th</sup> October</b>  | Primary 7 Mandarin Lessons  |
| <b>Wednesday 15<sup>th</sup> October</b>  | After School Guitar Lessons P5, P6 & P7 Week 4<br>3pm-3.30pm & 3.30pm-4pm               |
| <b>Wednesday 15<sup>th</sup> October</b>  | After School Dance P1 & P2: 2-3pm,<br>P3 P4 P5 P6 P7: 3-4pm Week 4                      |
| <b>Thursday 16<sup>th</sup> October</b><br>  | Book Sale 20p per book  |
| <b>Thursday 16<sup>th</sup> October</b>   | After School Maiden City Soccer P1 & P2: 2-3pm,<br>P3, P4, P5, P6 & P7: 3-4pm Week 4    |
| <b>Thursday 16<sup>th</sup> October</b>   | Crafty Kidz Art & Craft Club  |

|   |   |
|---|---|
|   | P1 & P2: 2-3pm,<br>P3, P4, P5, P6 & P7: 3-4pm Week  |
| <b>Friday 17<sup>th</sup> October</b><br>                                | Student Council non-uniform day £1 per child/£2 per family.<br> |
| <b>Friday 17<sup>th</sup> October</b><br>                                | Primary 5 Mrs Wilson's Class Assembly @ 9.30am. All welcome to attend.  |
| <b>Monday 20<sup>th</sup> October</b>   | Primary 6 Participate in the Red Cross Programme 'Immigration & Empathy'  |
| <b>Monday 20<sup>th</sup> October</b>   | After School R9 Sports P1 & P2: 2-3pm,<br>P3 P4 P5 P6 P7: 3-4pm. Week 5   |
| <b>Monday 20<sup>th</sup> October</b>   | After School Mini Professors P1 & P2: 2-2.50pm,<br>P3 & P4: 3-3.50pm Week 4   |
| <b>Tuesday 21<sup>st</sup> October</b>  | Primary 6 Participate in the Red Cross Programme 'Immigration & Empathy'  |
| <b>Tuesday 21<sup>st</sup> October</b>  | Boys Football @The Shared Village 3-4pm   |
| <b>Tuesday 21<sup>st</sup> October</b><br>Foundations<br> for Learning | Primary 1 Parent/Guardian Event @ 1.30pm in classrooms.   |
| <b>Tuesday 21<sup>st</sup> October</b>  | After School Singing lessons P1 & P2 2-2.45pm,<br>P3, P4, P5, P6 & P7 3-3.45pm Week 5   |
| <b>Tuesday 21<sup>st</sup> October</b>  | Young Authors and book publishing afterschool club.<br>Week 1 3-4pm P5, P6 & P7. Week 5   |
| <b>Wednesday 22<sup>nd</sup> October</b>  | Primary 7 Mandarin Lessons  |
| <b>Wednesday 22<sup>nd</sup> October</b>  | P6 Swimming Week 7  |
| <b>Wednesday 22<sup>nd</sup> October</b>  | After School Guitar Lessons P5, P6 & P7 Week 5<br>3pm-3.30pm & 3.30pm-4pm   |
| <b>Wednesday 22<sup>nd</sup> October</b>  | After School Dance P1 & P2: 2-3pm,<br>P3 P4 P5 P6 P7: 3-4pm Week 5  |
| <b>Thursday 23<sup>rd</sup> October</b>   | After School Maiden City Soccer P1 & P2: 2-3pm,<br>P3, P4, P5, P6 & P7: 3-4pm Week 5  |
| <b>Thursday 23<sup>rd</sup> October</b>   | <b>Crafty Kidz Art &amp; Craft Club- NOT IN THIS WEEK</b>   |

|   |  |
|---|--|
| Thursday 23 <sup>rd</sup> October   | Primary 6 attend 'The YES Project.'<br>Youth-Educated in Safety  |
| Friday 24 <sup>th</sup> October<br>  | Primary 5 Mrs Mitchell's Class Assembly @ 9.30am. All welcome to attend.   |
| Monday 27 <sup>th</sup> October   | After School R9 Sports P1 & P2: 2-3pm,<br>P3 P4 P5 P6 P7: 3-4pm. Week 6  |
| Monday 27 <sup>th</sup> October   | Primary 7 Parent/teacher meetings  |
| Monday 27 <sup>th</sup> October   | <b>MINI PROFESSORS CLUB IS NOT RUNNING THIS WEEK</b>   |
| Tuesday 28 <sup>th</sup> October  | <b>SINGING CLUB IS NOT RUNNING THIS WEEK</b>   |
| Tuesday 28 <sup>th</sup> October  | Primary 7 Parent/Teacher Meetings  |
| Tuesday 28 <sup>th</sup> October  | Young Authors and book publishing afterschool club.<br>Week 1 3-4pm P5, P6 & P7. Week 6  |
| Tuesday 28 <sup>th</sup> October<br>  | Parky the Magician Visit<br>Halloween Fancy Dress or Own Clothes.<br><b>£1/£2 per family donation for school funds please.</b><br>Full school day as normal.<br><br> |
| <p>Wednesday 29<sup>th</sup> October-Friday 31<sup>st</sup> October<br/> <u>School Closed for the Halloween Holidays</u></p> <div>   </div> <p>School Reopens on Monday 3<sup>rd</sup> November 2025</p> |  |

Thank you to our entire school community for your continued support of the school.